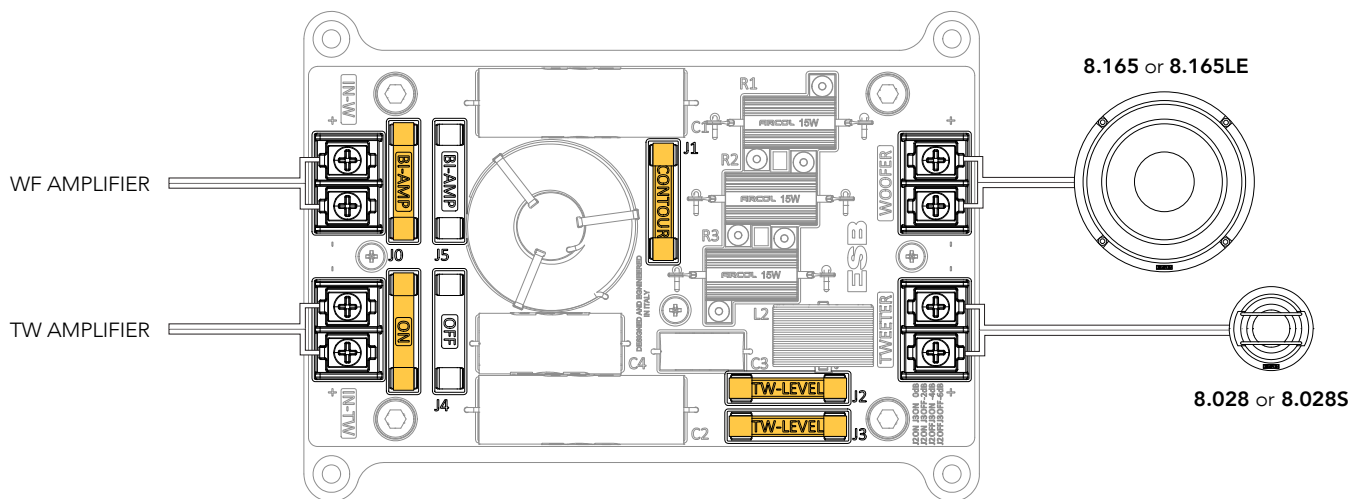


CROSSOVER NETWORK ADJUSTMENT

The crossover network 8.6K2CX have been designed to allow tonal adjustments to the woofer and tweeter response, plus tweeter level. These adjustments make it possible to fine-tune your system to suit your listening preferences and to compensate various speaker mounting installation and orientation.

- This crossover has been specifically designed for the 8000 series components, in particular: 8.165 or 8.165 LE woofer; 8028 or 8028S tweeter
- Possibility of multi-amplification connection
- Aluminum structure machined from solid with CNC machines
- Clear acrylic cover for improved ventilation and component protection
- Gold plated spacers and screws
- Gold-plated parameter adjustment jumpers for zero resistance and large diameter for ultra-high load capacity
- All coils are wound in air to minimize distortion
- Coil wire with large diameter (1.5 mm) and 99.9% pure copper
- Anti-inductive resistors with dissipating aluminum body, helps to manage very high powers in order to remain relatively cool, in this way the resistance does not vary
- Very high quality bi-metallized capacitors for maximum transparency of details in the medium and high frequencies. To increase the response speed the tweeter uses a configuration of smaller capacitors in parallel
- Compact size and practical and sturdy fixing system with 4 screws

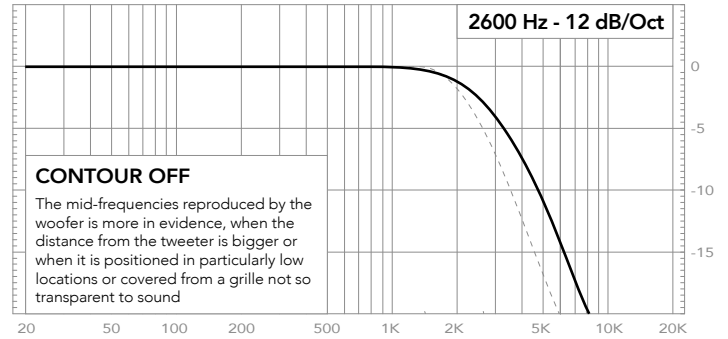
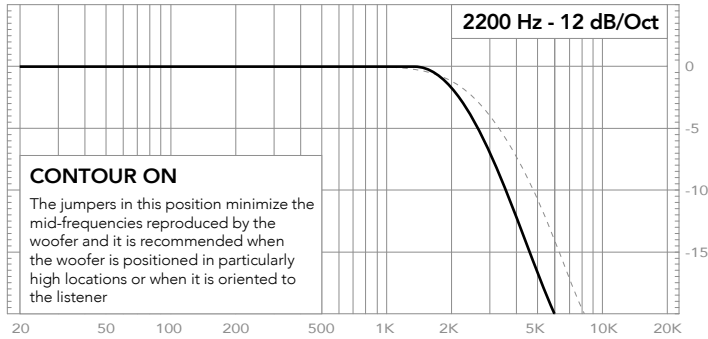
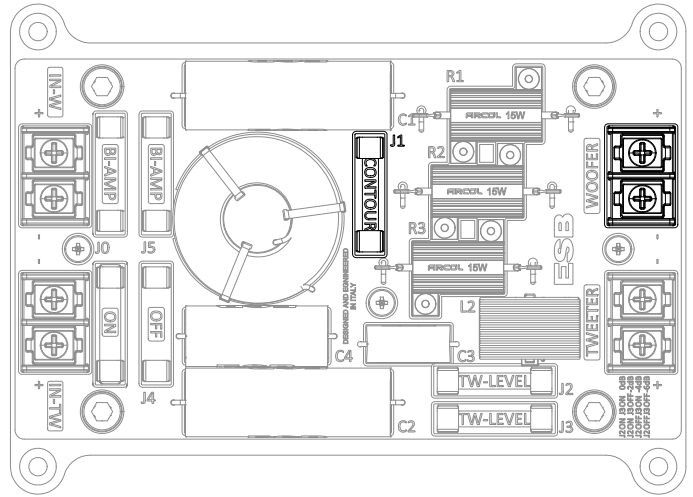
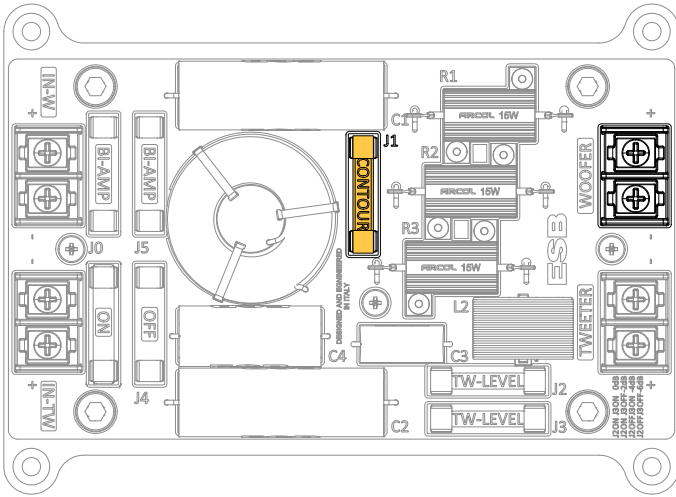
DEFAULT CONFIGURATION (BI-AMPLIFICATION)



The inputs are splitted, two amplifiers are needed, one drives the bass frequency section (woofer), the second drives the high frequency section (tweeter). These amplifiers can be set in full range mode as well with electronic crossover.

BIAMP + OFF: Without bi-amplification, the input used is the woofer (IN-W) and the signal is distributed to the output of the two channels (woofer and tweeter). Only one amplifier is used to drive the whole channel at the same time.

WOOFER CONTOUR



TWEETER LEVEL (0, -2, -4, -6 dB)

